

Important Precautions

1. In order to prevent severe damage to the cleaner, never power on the unit when it is outside of the swimming pool.
2. The power cord must be connected to an appropriate earthed socket.
3. Do not operate the cleaner when people are in the pool.
4. Ensure the cable hook is locked to the ring before immersing the cleaner into water. When lifting the cleaner out of the water, always use the ring and never the cable.
5. For optimal performance, before power on make sure that there is no air left inside the cleaner (no more air bubbles coming from the cleaner and the cleaner is fully submersed on the pool bottom).
6. Do not try to move the floaters along the electrical cable. Leave them always in the original positions.
7. Before power on, make sure the cable is fully released to avoid any winding, which could affect the cleaner's performance or cause damage.
8. The filter bags should be cleaned every time you use the unit. This will prevent that the dirty filter bags affect the normal operation of the cleaner.
9. The cleaner should be stored in a cool and ventilated place, away from direct sunlight, when not in use.
10. The power supply unit should be placed in a shaded area. In order to avoid overheating and potential damage of components, never cover the power supply unit.
11. Only authorized after sales service personnel should open the cleaner's power supply unit and motor assembly, otherwise the warranty will be invalidated.
12. In order to avoid any accident/damage, it is strongly recommended to connect the caddy with a fixed holder beside the swimming pool by using the safety rope (included in the box).
13. Do not use the cleaner beyond the working environment/conditions stated in this manual.

Please read this instruction manual carefully before use and keep it for future reference.

Contents

I .Introduction.....	P 3
II. Safety·	·P 3
III. Specifications.....	P 4
IV.Components of Sw imming Pool Cleaner.....	P 4
V . Preparation Before Operating.....	P 7
VI. Cleaner Operation.....	P 8
VII. Works After Use of Cleaner.....	P10
VIII. Function & Instructions for Sliding Block.....	P11
IX. Helpful Tips.....	P13
X. Trouble Shooting.....	P16
XI. Packing List.....	P17
XII. Warranty	P18

I. Introduction

The GC2028PRO automatic swimming pool cleaner is a new type of highly efficient and energy-saving swimming pool cleaning robot. Through its advanced computer controlled program, it can clean the pool walls and bottom automatically. At the same time, it filters the pool water and gets rid of suspended particles.

For safe operation, the cleaner works on 24V direct current.

II. Safety

1. Position of Power Supply Unit

The power supply unit with shelf should be properly positioned so that the cleaner can reach all the corners of the swimming pool, and must be at a minimum distance of 3.5 meters from the edge of the pool (as shown in Fig.2-1).

Note: Power supply unit should be placed in a shaded area during operation (Fig. 2-1)

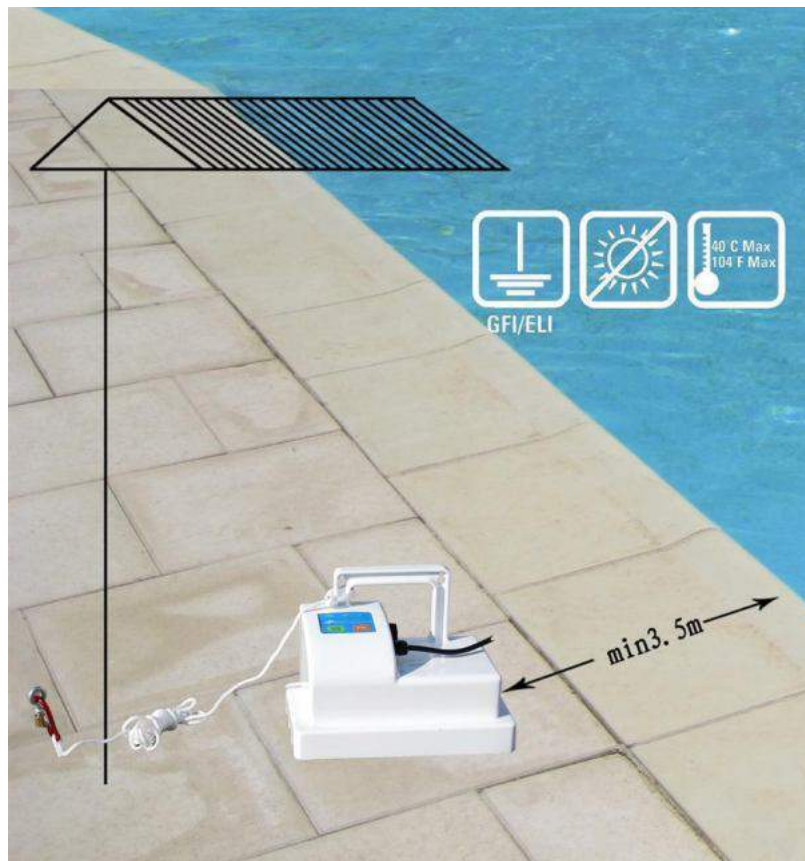


Fig. 2-1

2. Requirements for Power Supply

Before connecting the power supply to the cleaner, please check that the local rated voltage and frequency (hertz) correspond to that of the unit.

Rated input voltage: 110(120)VAC / 220(230)VAC

Frequency: 50Hz/60Hz

III. Specifications

1. Rated input voltage: 110(120)VAC / 220(230)VAC
2. Frequency: 50Hz/60Hz
3. Output Voltage: DC 24V
4. Rated input power: 200W
5. Rated output power: 150W
6. Working cycle: 3hour/5hour
7. Cable length: 20m
8. Cleaning band width: 358mm
9. Maximum cleaning area: 200 m²
10. Filtering capacity: 15m³/h
11. Filtering capability: 100/200μm
12. Water temperature of use: 10°C - 32°C
13. Creeping speed: 12 m/min
14. IP Grade: cleaner-IP68; power supply unit-IPX4
15. Working temperature: 10°C - 40°C
16. Weight of cleaner: 9.5kg (without cable)

IV. Components of Swimming Pool Cleaner

1. The GC2028PRO Automatic Swimming Pool Cleaner consists of power supply unit, cleaner, trolley. The following are the components of each part (see Fig. 4-1 / Fig. 4-2/ Fig.4-3)



Fig. 4-1

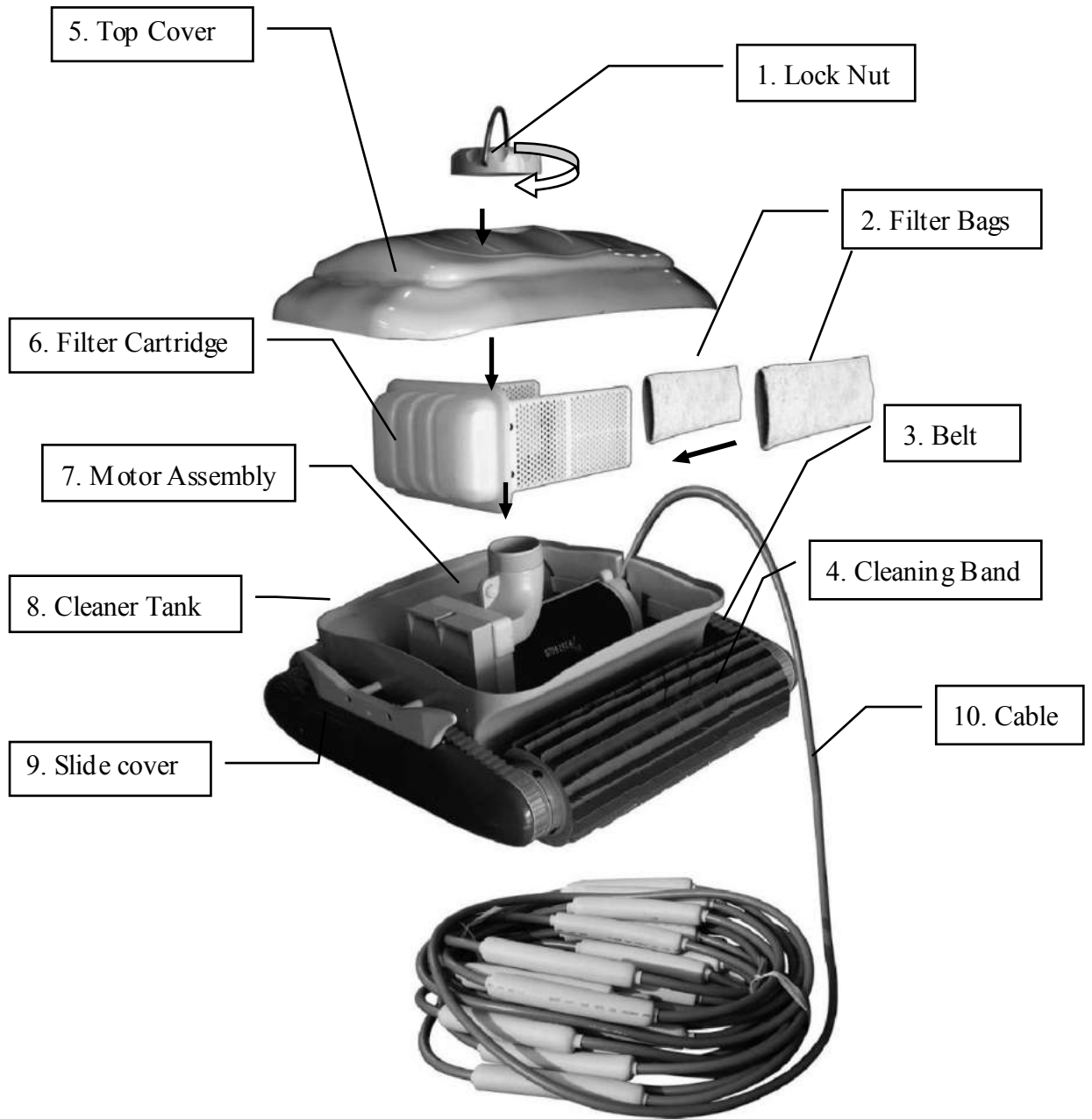


Fig. 4-2

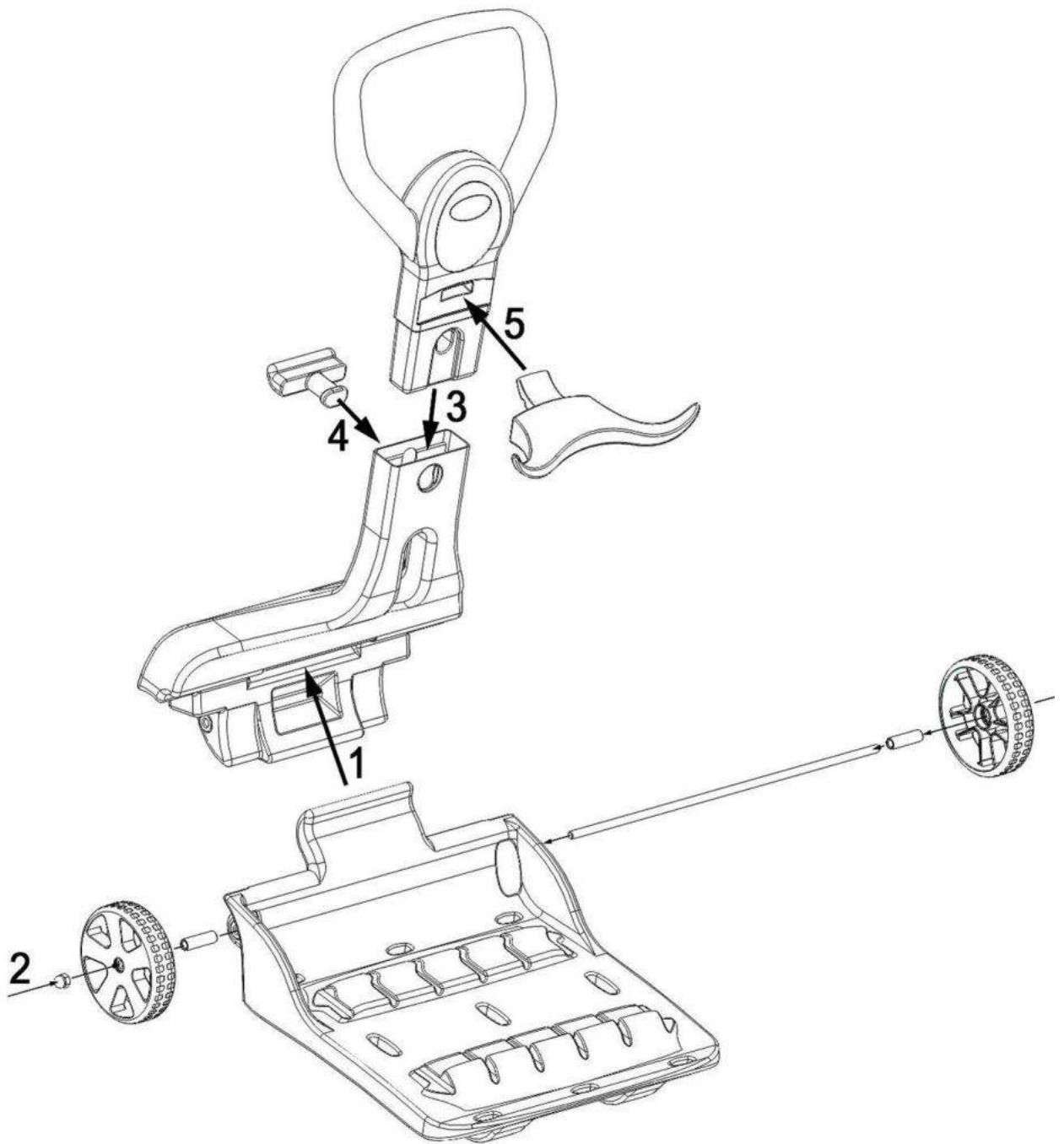


Fig4-3

Assemble the trolley as shown in Fig.4-3
Hang the power supply unit on the position shown in 4 of Fig. 4-3

V. Preparation before Operating

1. Hitching Cable Hook

Hitch the cable hook (Fig. 5-1-1) to the stationary ring on the lock nut. Carry the stationary ring and put the cleaner into the pool (Fig. 5-1-2). Allow all of the air inside the cleaner to flow out completely (Fig. 5-1-3) from the unit. Then The cleaner can sink to the bottom of the pool (Fig. 5-1-4)

Warning: for optimal performance, make sure that there is no air left inside the cleaner (no more air bubbles come from the cleaner and the cleaner is completely submerged on the pool bottom).

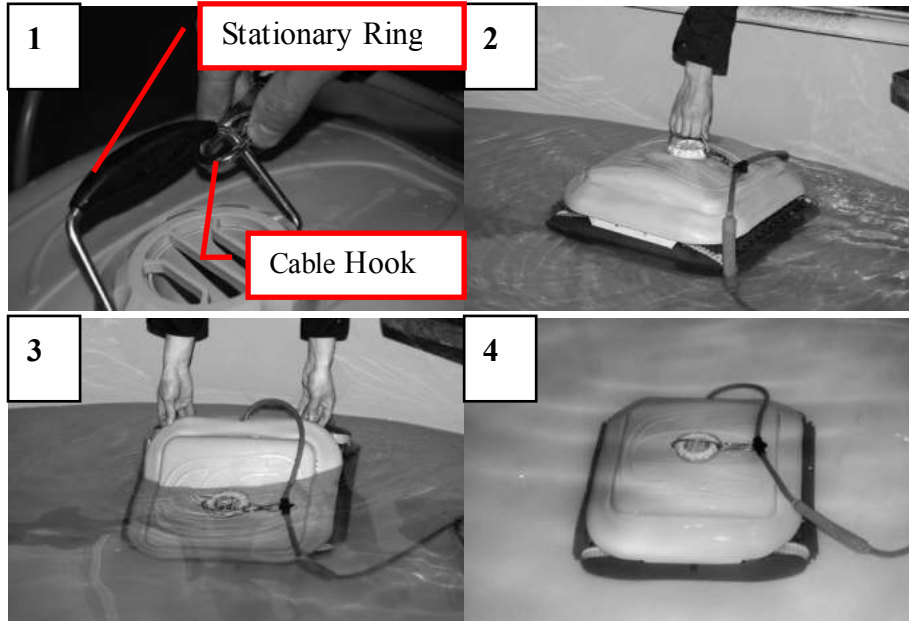


Fig. 5-1

2. Power Connection

Once the cleaner sinks to the bottom of the pool ((Fig. 5-1-4)), unfold the power cable in the attached package and plug it into the socket on power supply unit . Then plug the cable line into the socket ; note: make sure to plug it in the correct direction and position), and fasten the nuts on both sides of the plug. Connect the power cord to the power socket (Fig. 5-2). The unit is now ready to start cleaning.



Fig. 5-2

VI Cleaner Operation

Panel operation

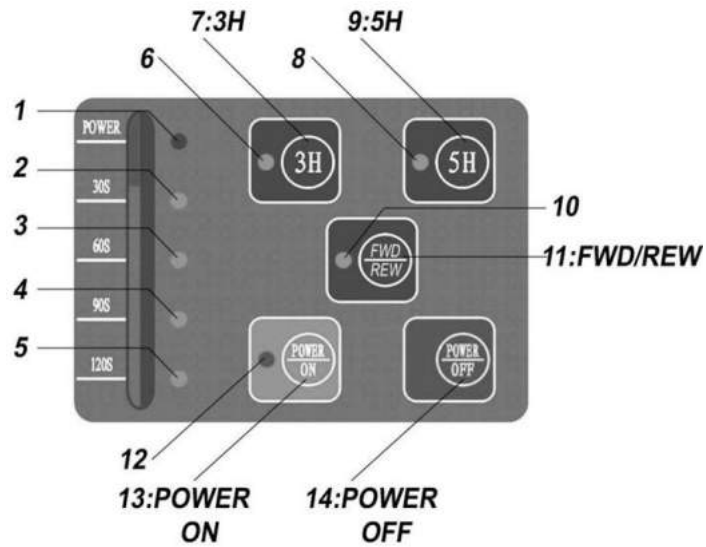


Fig.6-1

1). Buttons & indicator lights instructions

Item	Name	Specification	Function
1	POWER	Power indicator light	Will flash when connect to power
2	30S	Working status indicator lights	4 lights will flash repeatedly under manual mode; One light will flash under auto mode, also has the function of alarm as stated below in "Alarm instructions"
3	60S		
4	90S		
5	120S		
6			
7	3H	Auto 3h button	Cleaner will work in 3h mode
8		Auto 5h indicator light	
9	5H	Auto 5h button	Cleaner will work in 5h mode

10		Manual mode indicator light	
11	FWD/REW	FWD/REW button	Press once for forward; press twice for stop; press three for backward
12		Power on indicator light	
13	POWER ON	Power on button	Cleaner gets into standby mode after pressing this button
14	POWER OFF	Power off button	

2). Example

Here is steps to operate the cleaner in auto 3h mode :

- 1) Press the button 'Power On' on the panel and the power on indicator light flashes. Now the cleaner is in standby mode.
- 2) Press "3H" button, indicator 6 and 2 in fig will flash and the cleaner gets into 3h cleaning mode.
- 3) Indicator 2/3/4/5 will flash repeatedly to indicate the current status.
- 1) Cleaner will power off automatically after 3h working.

3). Alarm instructions

When there is a failure alarm, a corresponding indicator light will flash with beep.

Flashing indicator lights	Reasons and methods
30S, 60S, 90S and 120S	The robot has climbed out of the pool, or there is no water in the pool.
120S	The robot is not connected. Please connect the robot cable with the power supply unit.
All indicator lights	The water pump motor is locked. Please contact a professional.
90S	The power is abnormal. Please contact a professional.

Note: Make sure that the cleaner has been powered off before lifting out of pool.

Remote control operation

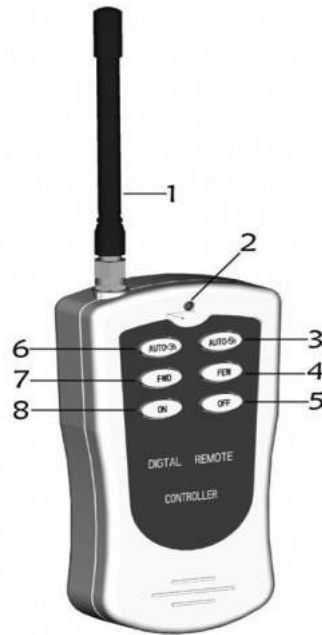


Fig.6-2

- (1) Power on: Press "ON" (Fig.6-2-8), cleaner switch into standby mode.
- (2) Power off: The cleaner will stop working after pressing "OFF" at any mode.
- (3) FWD by manu mode: Firstly, switch into standby mode by following step (1), then press FWD (Fig.6-2-7) and the cleaner will move forward.
- (4) REW by manu mode: Firstly, switch into standby mode by following step (1), then press REW (Fig.6-2-4) and the cleaner will move rearward.
- (5) 3h AUTO mode: Firstly, switch into standby mode by following step (1), then press AUTO/3h (Fig.6-2-6) and the cleaner will work in 3h AUTO mode.
- (6) 5h AUTO mode: Firstly, switch into standby mode by following step (1), then press AUTO/5H (Fig.6-2-3) and the cleaner will work in/ switch into 5h AUTO working mode.

VII. Works after use of cleaner

Removing Cleaner from Pool

The cleaner will power off automatically after one cleaning cycle. Unplug the power cable, pull the cable line slightly and lift the cleaner by carrying the stationary ring on the lock nut (Fig. 4-2-1)

Note:

- 1) In order not to scratch the pool wall or damage the cleaner, avoid the cleaner touching the pool wall while carrying out from pool.
- 2) Before carrying outside from pool, suspend the cleaner above water for about 10-15 seconds to release the water left inside the cleaner.
- 3) To carry out the cleaner from pool, please hold the stationary ring only, never pull cable (Fig. 7-1).



Fig. 7-1

Put the cleaner on the edge of pool, open the lock nut (Fig.4-2-1) and remove the top cover (Fig.4-2-5). Then take out the filter cartridge (Fig.4-2-6) and take off the filter bags (Fig.4-2-2).

Clean the debris & silt on filter bags using clean water (Fig.7-2-1), then reset onto filter cartridge. There is a filter outlet added into the cleaner, after using the cleaner, there might be some dirt in it which should also be cleaned. Then put the filter cartridge back into the main frame of cleaner (Fig.7-2-2).

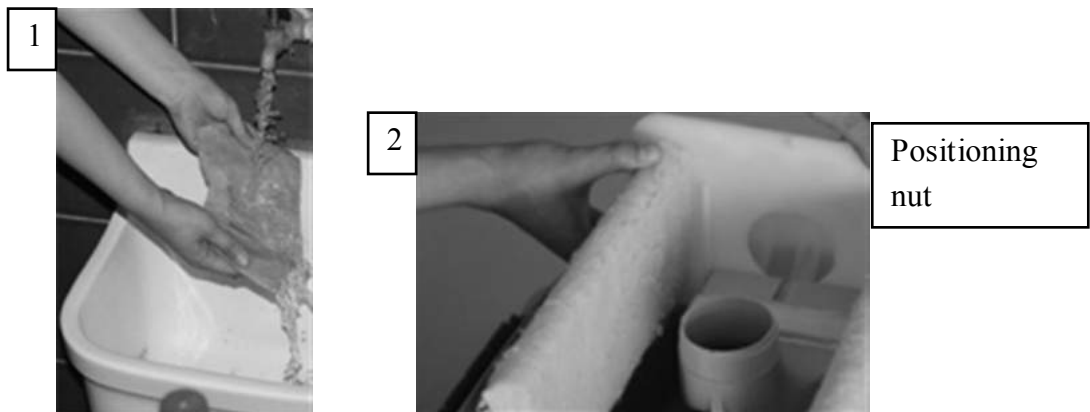


Fig. 7-2

Note: There is a positioning nut on the upper part of filter cartridge to avoid any incorrect assembly.

Install top cover (Fig.4-2-5) and fasten with lock nut (Fig.4-2-1).

Note: To avoid any effect on the performance of the cleaner, make sure that the cleaner tank is completely inserted into the sealing strips slot of top cover, which should be installed in correct direction. Make sure the cable is in correct position as per Fig. 7-3 to avoid damage.

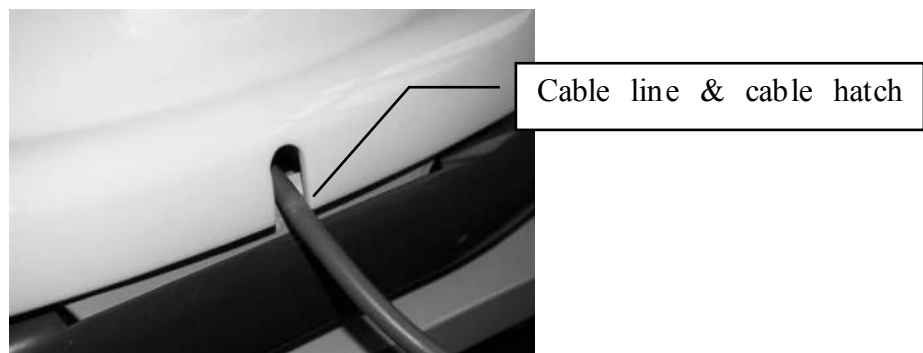
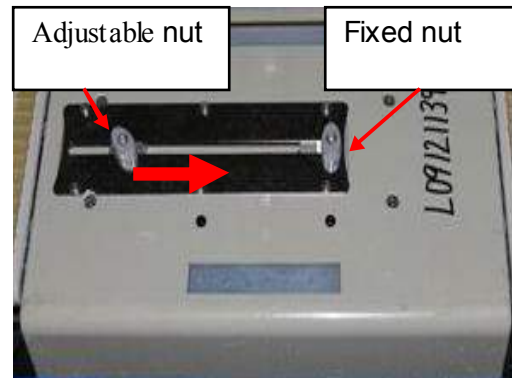
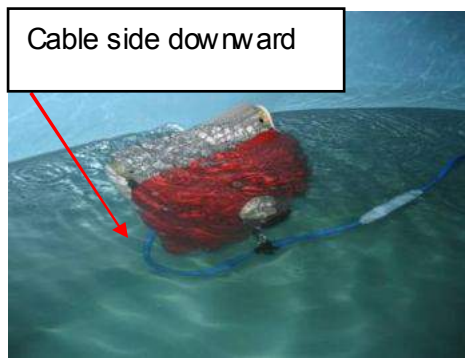


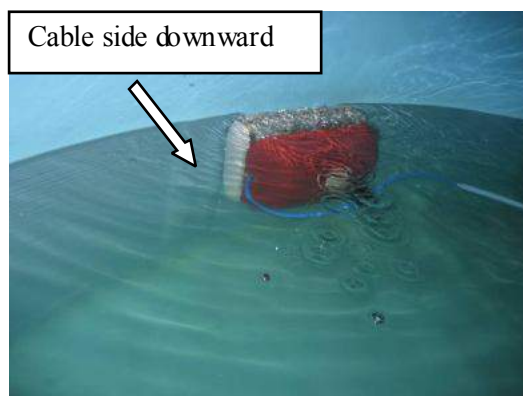
Fig.7-3

VIII. Function & Instructions for Sliding Block

1. The Sliding Block is located at the bottom of the cleaner, beneath the motor assembly.
2. This Sliding Block is for adjustment in special cases when cleaning the pool walls. The adjustment is done by sliding the nut to the left or to the right. The Sliding Block is preset at the center position. Don't move the block unless you want to adjust as described in point number 3 "adjusting method"
3. Adjusting method:
 - a) If the angle on the water surface of the cleaner is too big, so as to cause air to get inside that affects normal operation, slide the adjustable nut in the direction backward from the cable side. 10-20mm scale sliding for each time is suggested (or according to particular conditions). Then lock the adjustable nut.

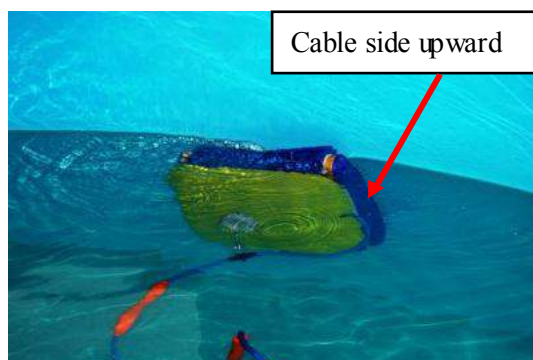


- b) If the angle on the water surface of the cleaner is too small (or the cleaner stays in one place for a long time), slide the adjustable nut in the direction toward the cable side. About 10-20mm scale sliding for each time is suggested (or according to particular conditions). Then lock the adjustable nut.

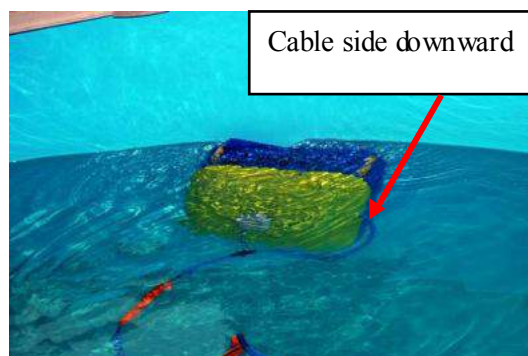


- c) If the cleaner is not in a correct cleaning angle (cable side upward), slide the adjustable nut toward the cable side by 30-40mm, then lock the adjustable nut.

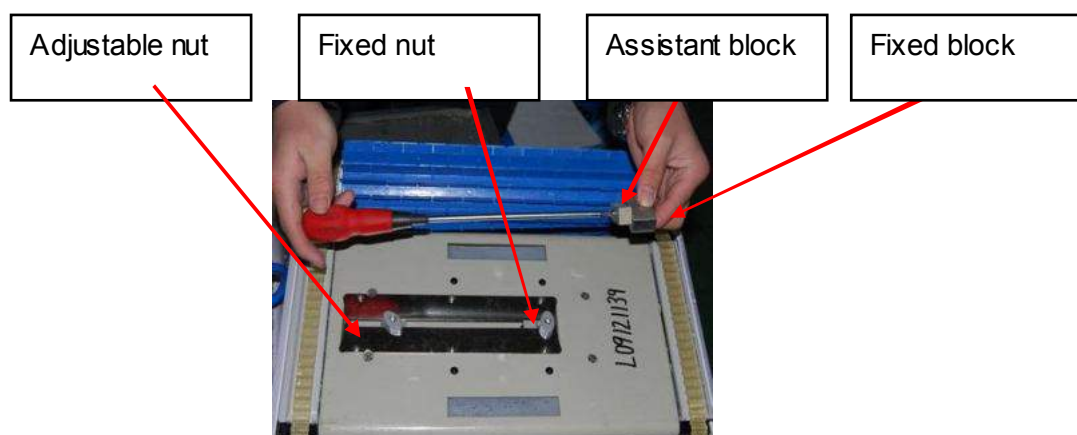
d) Incorrect Status



e) Correct Status



Suggestion: In case the cleaner has difficulty climbing walls after 10 days' using, operator can remove the assistant block and put back the fixed block (if have), then move the adjustable nut to a proper position.



4. This Sliding Block can also be used to adjust the cleaner to fit for different pool conditions (ex. Pure water and salt water). Please contact local dealer if the cleaner floats above pool floor.

IX. Helpful Tips

1. Different density of filter bags can be used in different seasons.
2. After pulling out the cleaner from the pool each time, please clean or change filter bags in time.
3. Ensure PH level of pool water is 7.0-7.2.
4. Ensure temperature of water in pool is 12°C-32°C.
5. Ensure brushing the cleaning band each time after cleaning for next time use.
6. Do not restart the unit immediately after it stops. Allow 30 seconds before restarting.
7. The cleaner should be stored in a ventilated place with temperature between 5°C-40°C (The positions of the floaters on the cable should not always be changed to avoid influencing the working condition of the cable). Avoid any direct exposure of cleaner to sunlight.
8. Please contact the agents for filter bags with different density.
9. It's strongly recommend that to fasten the swelling pipe aside the pool, then connect

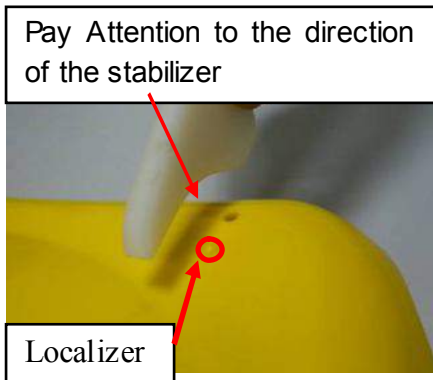
the power supply unit by the provided safety rope to avoid the power supply unit to be pulled into pool by the cleaner.

10. Read carefully this manual including trouble shooting before using the cleaner.

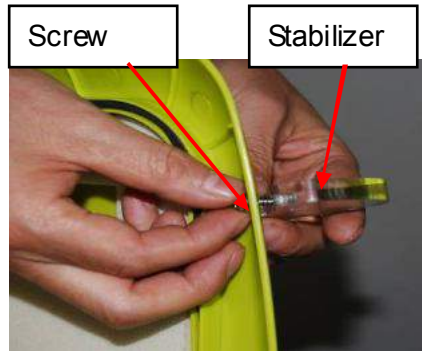
Install the stabilizer

Recommend to use this standing nut on the pool cleaner for using in the pool which has the steps in order to avoid the turn upside down of pool cleaner.

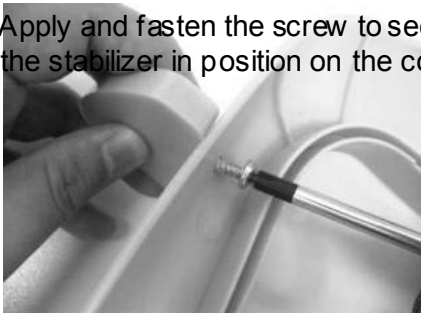
1, Align the hole of the stabilizer to the hole and the localizer on the top cover.



2, Put screw through the hole and fasten.



3, Apply and fasten the screw to secure the stabilizer in position on the cover



4, Repeat same assembly for the other 3 stabilizers.



5, Top cover with four stabilizers



Instruction of installing the trolley axle:



X. Trouble Shooting

Symptom	Possible reason	Corrective actions
Cable twists or coils up	Cable not fully released	Unplug power line, release cable
	Obstruction in pool	Remove obstruction in pool
	Excess cable in the pool	Remove excess cable out of the pool and ensure the proper length of cable in pool.
	Gets stuck on main drain cover	Turn off pool filter system
Cleaner does not reach all pool areas	Power supply was wrongly positioned	Place power supply in position so that cleaner can reach all areas
	Pool filter and pump is on	Turn off pool filter system
	Cable not long enough in pool	Release cable
Cleaner does not climb walls properly	Filter bag filled with debris	Replace filter bags
	Large debris in pool	Contact dealer, use thinner filter bags
	Algae on walls	Brush walls
	Water temperature is too high/low	Optimally water temperature between 10C-32C
	Brush worn	Contact dealer, replace brushes
	Material of swimming pool wall too smooth	Contact dealer, replace special brushes
	Cleaner too light—trapped air	Turn off cleaner, exhaust air inside cleaner
	Unsuitable PH level	Check PH level between 7.2-7.6
	The nut on sliding block is not in proper position or loose	Change back to original position, or contact local vendor.
Cleaner does not work	Power cord not connected well	Plug power cord and cable line
	Damaged during transportation	Contact local vendor
	Local rated voltage is not suitable for cleaner	Contact local vendor
Cleaner does not sink	Air inside cleaner	Turn off cleaner, ensure there is no air inside cleaner and let cleaner sink to bottom of pool
Roller/belt cut	Debris blocked in driving system	Contact local vendor
Cleaner float out of water	Cleaner climb too high, air in cleaner	Turn off cleaner, re-exhaust air. Contact dealer if it happens frequently
Cleaner damage	The operator does not maintain the cleaner	Buy or clean filter bags
	The cleaner works on the land	It will damage the motor. Stop the cleaner immediately
Cleaner turns upside down when climbing up on the top step.	Water depth on the top step is too shallow to hold the cleaner.	Assemble the stabilizer provided.

XI. Packing List

Item	Name	Model	Quantity (pc)	Application	Note
1	Cleaner	GC2028PRO	1	For all models	In carton
2	Power supply unit	GC2028PRO	1	HJ-2028	In carton
3	Manual and certificates, etc.		1	For all models	Big plastic bag
4	Filter bag	As required	2	For all models	Big plastic bag
5	Remote control		1	GC2028PRO	Mini plastic bag
6	Battery		1	For all models	Mini plastic bag
7	Caddy handle	GC2028PRO	1	For all models	In carton
8	Connection holder	GC2028PRO	1	For all models	In carton
9	Underpan		1	For all models	In carton
10	Lock pothook		1	For all models	In carton
11	Cable holder		1	For all models	In carton
12	Caddy w heel axle		1	For all models	In carton
13	Nut	M10	2	For all models	Mini plastic bag
14	Axle sleeve		2	For all models	Mini plastic bag
15	stabilizer		4		Mini plastic bag
16	screw		4		Mini plastic bag

XII. Warranty:

This product has passed all quality control and safety tests, conducted by the technical department of the factory

Warranty information:

1. Warranty period is 2 years or 1200 working hours from the date of purchase and is settled in accordance with the terms established by Directive 1999/44/EC of 25th of May regarding guarantees on the sale of consumer goods as well as the local law in the Country of Purchase within the European Union.
2. This warranty is void if the product has been altered, misused, or has been repaired by unauthorized personnel.
3. The warranty extends only to manufacturing defects and does not cover any damage resulting from mishandling of the product by the owner
4. The sales invoice must be presented for any claim or repair during the warranty period

Please contact your local dealer for any warranty issues.



Environmental Programmes, WEEE European Directive



Please respect the European Union regulations and help to protect the environment.

Return non-working electrical equipment to a facility appointed by your municipality that properly recycles electrical and electronic equipment.

Do not dispose them in unsorted waste bins.

For items containing removable batteries, remove batteries before disposing of the product.