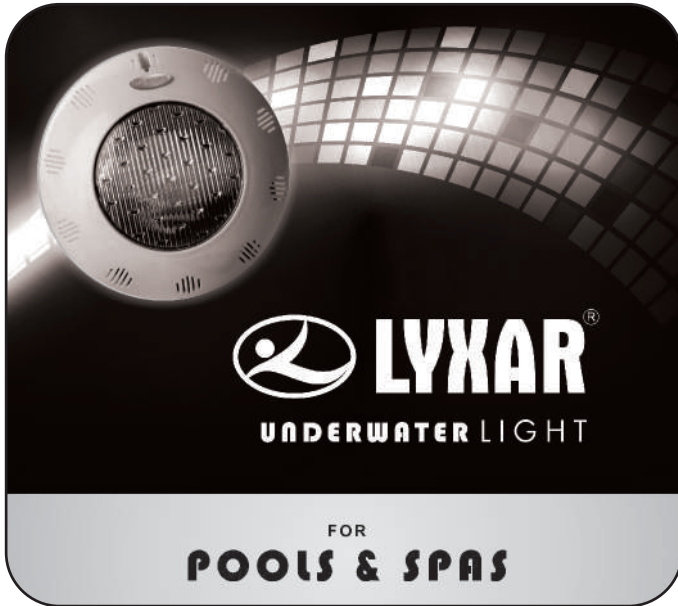


LPR-075/NPR-100

Series Underwater

Light Operating Procedures



READ AND KEEP THESE INSTRUCTION !

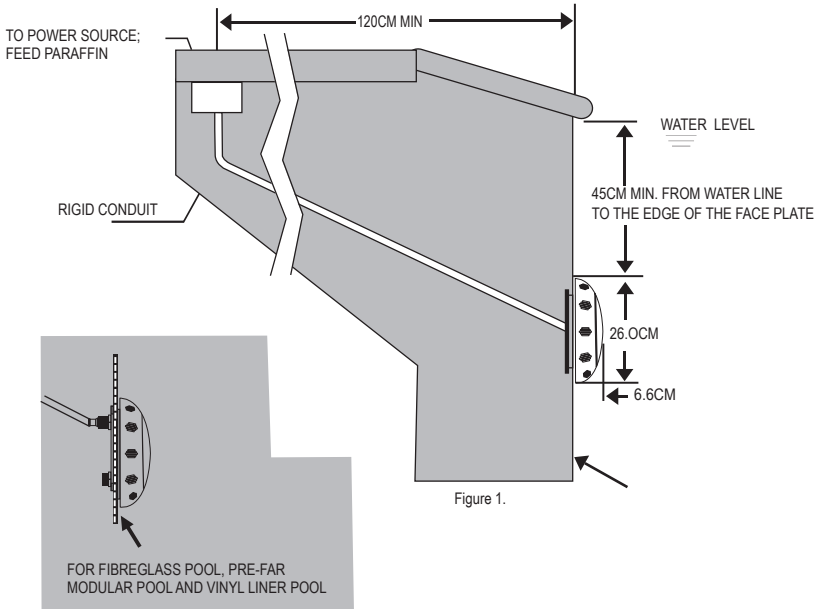
⚡ DANGER ⚡

RISK OF ELECTRICAL SHOCK OR ELECTROCUTION

This underwater light fixture must be installed by licensed or certified electrician or a qualified serviceman in accordance with all applicable local codes and ordinances. Improper installation will create an electrical hazard which could result in death or serious injury to pool users, installers or other due to electrical shock and may also cause damage to property. Always disconnect power to the pool light at the circuit breaker before servicing the light. Failure to do so could result in death or serious injury to serviceman, pool user or other due to electrical shock

INSTALLATION

A. Preparatory steps which must be completed by the electrician before light is installed, see Figure 1.



1. Ensure that electrical system of the pool conforms to the requirement of all the current local codes and ordinances. A licensed or certified electrician must install the electrical system to meet or exceed those requirement before the Underwater Light is installed.

- the junction box, or the below voltage transformer for 12 volt models, is located at least 120CM from the edge of the pool, see figure 1.
- The light fixture and all metal items within 240CM of the pool must be properly electrically bonded.
- The mounting bracket must be properly installed so that the edge of the face plate of the Underwater Light's lens is at least 45CM below the surface of the in the pool ,see Figure 1.

2. Consult the local Government Building Department to be center that the pool's electrical system meets all applicable requirement.

B. Perform the following steps after the electrical system requirement are met.

1. Locate position on a vertical wall where light is to be installed. The edge of the face plate must be 45CM below normal water level, see Figure 1.

2. Connect conduit to midst of Mounting Spacer(left of Bracket), see Figure 2.
3. If pool surface is to be plastered, you must allow proper concrete cutback for piaster thickness . Finish concrete surface must be flush with Mounting Spacer . CAUTION : Finish area surrounding Mounting spacer MUST be flat and flush with the face of Mounting Space , this ensures a snug fit between light and wall, see Figure 3.
4. After pool surface is finished, trim the Conduit .
5. Wrap a length of the cord up to a maximum of 2.4mt long on the back of light assembly. This extra cord allows you to bring the light cut of the pool for relamping and servicing .
6. Connect cord electrical wires at junction box ,through Conduit, be careful not to pull the 75mm-80mm of slack cord at the light through the conduit when connecting the wires.
7. Connect all wires to the corresponding circuit wires in the junction box and feed paraffin.
8. Secure the junction box cover in place.
9. Before operating the light for more than 10 second fill pool until the Underwater Light is completely submerged in water. To check for proper operation turn on main switch or circuit breaker as well as the switch that operates the Underwater Light itself.
10. Rotating Locking System ensures light is secured to bracket ,see Figure .4 (figure 5)

C. Winterizing: Light should be left in place for winterization.

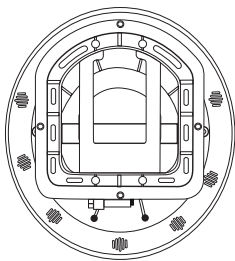


Figure 2.

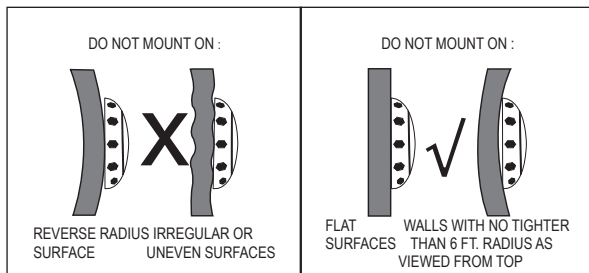


Figure 3.

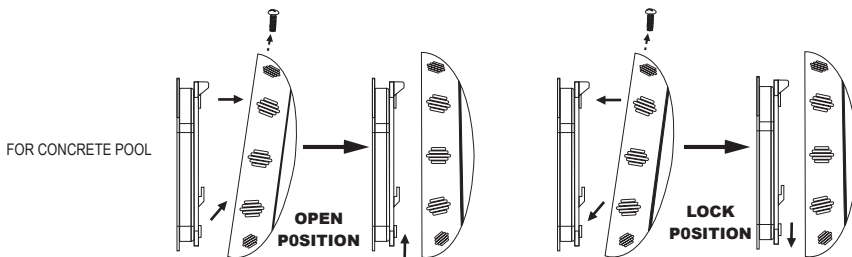


Figure 4.

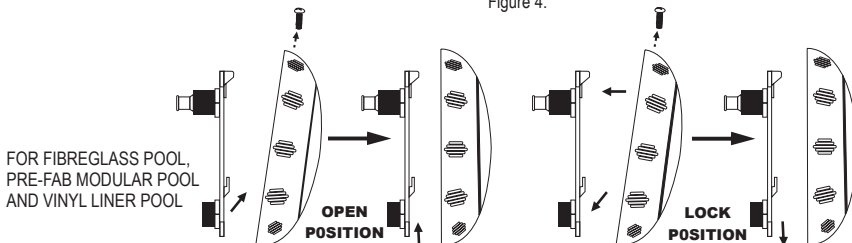
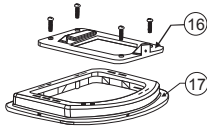
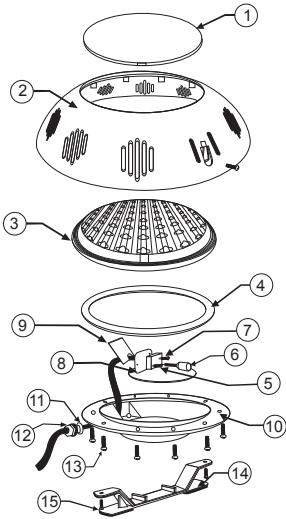
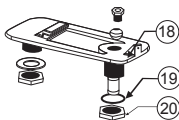


Figure 5.

REPLACEMENT PARTS



FOR CONCRETE POOL



FOR FIBREGLASS POOL, PRE-FAB
MODULAR POOL LAND VINYL LINE POOL

Key No	Description	Qty	Part NO
1	Colored Lens Cover	3	PR-01-01
2	Face Plate	1	PR-01-02B
3	Clear Lens	1	PR-01-03
4	O'ring Seal	1	PR-01W-01
5	Sealing Nut	2	PR-01W-02-2
6	Globe	1	PR-01-11
7	Globe Holder	1	PR-01W-03
8	Reflector	1	PR-01W-04
9	Cover Over	1	PR-01-05
10	Body	1	PR-01-04
11	O'ring	1	PR-01-013
12	Tooth Head	1	PR-01-006
13	Screw	9	PR-01W-05
14	Light Bracket	1	PR-01-06
15	Screw	6	PR-01W-06
16	Light Bracket	1	PR-01-07
17	Wall Bracket	1	PR-01-08
18	Light Bracket	1	PR-01-07B
19	O'ring	2	PR-01W-07
20	Nut	2	PR-01-09

WARNING

⚠ Never operate this Underwater Light for more than 10 seconds unless it is totally submerged in water. Without total submersion, the assembly will get extremely hot, which may result in serious injury to pool users, installers, or by sanders, or in damage to property.

⚠ Be sure power is off before installers or removing lamp. Allow lamp to cool before relamping. This light fixture uses, a Halogen Quartz lamp. Do Not Touch lamp with bare hand, this may severely reduce its life. Use the plastic furnished with the replacement lamp to eliminate finger prints from getting on lamp.